






## Data Centre Training and Certification Programs

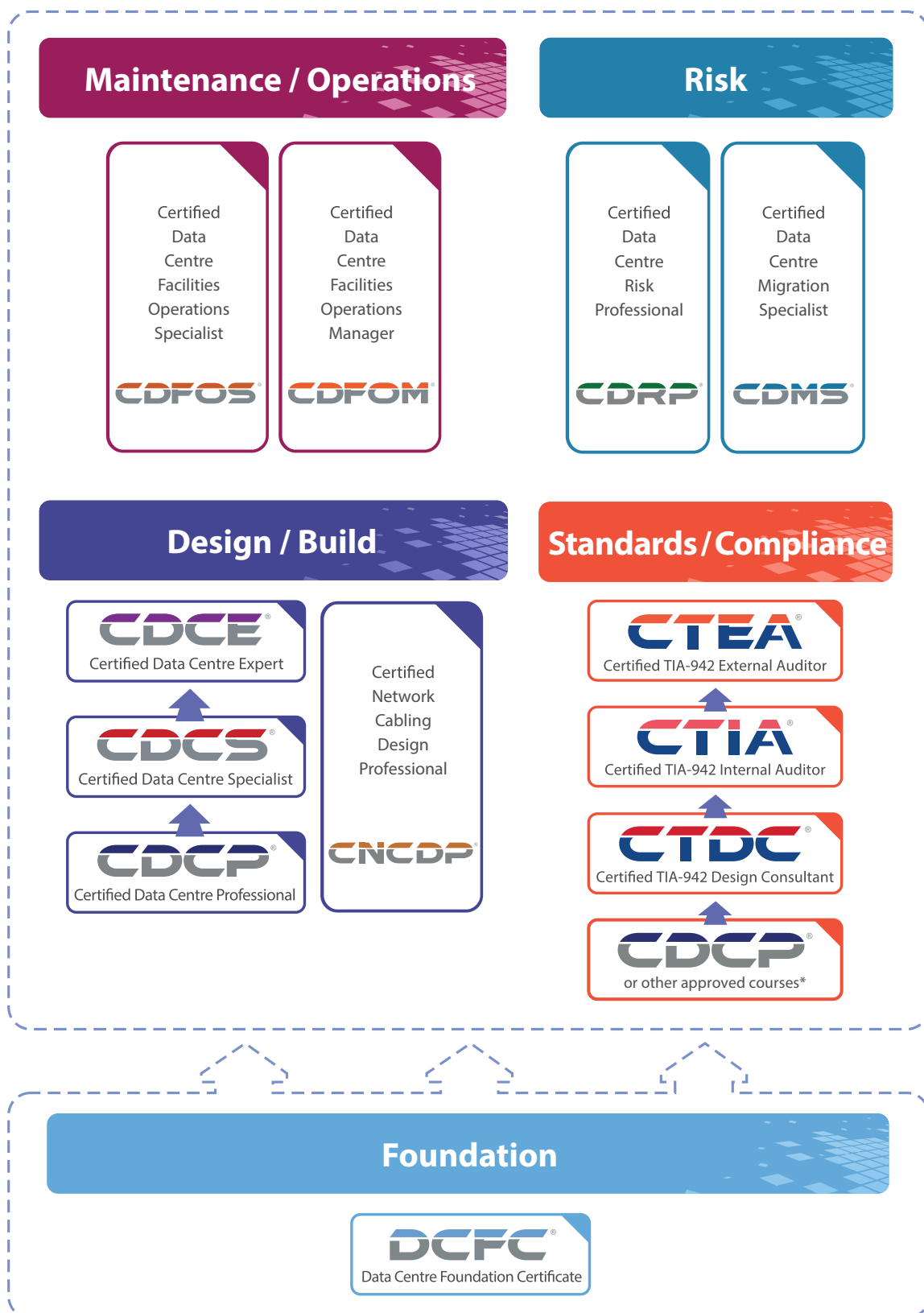
Knowledge > Global Accreditation > Recognition

-  [www.iverson.com.my](http://www.iverson.com.my)
-  [linkedin.com/company/iverson-associates](https://linkedin.com/company/iverson-associates)
-  [facebook.com/IversonAssociatesSB](https://facebook.com/IversonAssociatesSB)
-  [instagram.com/iverson\\_associates](https://instagram.com/iverson_associates)



# EPI Data Centre Training Framework®

Course curriculum for data centre professionals.



© Copyright by EPI (Enterprise Products Integration Pte Ltd) 2020. All rights reserved.

The **EPI Data Centre Training Framework®** provides a structured course curriculum for individuals working in and around data centre facilities and data centre operational management. It addresses the various disciplines required to design and manage a high-availability and efficient data centre. EPI's data centre course curriculum is not only the first in the world, it is also by far the largest in the industry. Many companies have specified these courses as prerequisites for their staff working in and around the data centre and use them as part of their career planning initiatives. Recognised globally, these certifications add value to both companies and individuals.

## Foundation



Data Centre Foundation Certificate

**Duration :** 2 days

**Prerequisite :** None

DCFC® provides a global overview and comprehensive knowledge on data centres. It forms a solid foundation for participants who wish to pursue a career in the data centre, ICT, infrastructure or the M&E design industries; or further their professional education in data centre specialisations.

## Design / Build Specialisation



Certified Data Centre Professional

**Duration :** 2 days

**Prerequisite :** None

CDCP® is the entry level for the Data Centre Design/Build specialisation. This course focuses on the key components of the data centre. CDCP® training will address how to setup and improve efficiency of key aspects in a high-availability data centre such as power, cooling, security, cabling, safety, etc. The CDCP® training will also address the key operations and maintenance aspects of a mission-critical data centre.

**Next Level :** CDCS®



Certified Data Centre Specialist

**Duration :** 3 days

**Prerequisite :** CDCP®

CDCS® is the second level in the Data Centre Design/Build specialisation. This is an advanced course which focuses on the knowledge and criteria in order to review and make improvements on existing data centre facilities and to decide on the correct implementation of new data centre facilities. It will bring participants to the level of a compatible sparring partner with suppliers, to verify offers provided by vendors for correctness, effectiveness and efficiency. CDCS® is a must-have certification for professional data centre managers and personnel.

**Next Level :** CDCE®



Certified Data Centre Expert

**Duration :** 5 days

**Prerequisite :** CDCS®

CDCE® is the final and highest level of the Data Centre Design/Build specialisation. It provides participants with the knowledge and skills to analyze a given business case, perform technical evaluation for a project plan and a set of designs for implementation of a mission critical data centre. This course also covers product evaluations, demonstrates how to select equipment, develop equipment test scripts (IET) and integrated performance and validation testing (IPVT). CDCE® builds upon knowledge gained in CDCP® and CDCS® courses. Participants who pass the exam will join the industry's elite data centre project design experts.



Certified Network Cabling  
Design Professional

**Duration :** 2 days

**Prerequisite :** None

CNCDP® gives in-depth knowledge of designing and implementing the physical network cabling systems, end-to-end cabling (outside cabling until the rack). It includes the key subjects such as; technical standards, design of different cabling sub-systems, calculation and material requirements, architecture, installation, testing and acceptance.

## Maintenance / Operations Specialisation



Certified Data Centre Facilities  
Operations Specialist

**Course Duration :** 3 days

**Prerequisite :** None

CDFOS® course covers the complete competences required for operational staff working on the day-to-day operations of a mission critical data centre. Participants will learn which processes should be in place, and the critical elements of those processes and how to execute them. The course is fully aligned with the DCOS® (Data Centre Operations Standard).



Certified Data Centre Facilities  
Operations Manager

**Course Duration :** 3 days

**Prerequisite :** None

CDFOM® course enables participants to gain in-depth knowledge on managing data centre operations. It covers key subject matters, including but not limited to, capacity planning, latest green initiatives, how to properly commission and decommission equipment, compliance to safety standards, statutory compliance and international standards, people and vendor management, incident/crisis management, as well as techniques to keep operations really simple, manageable, effective and efficient. CDFOM® is fully aligned with the DCOS® (Data Centre Operations Standard).

## Risk Specialisation



**Duration :** 2 days  
**Prerequisite :** None

CDRP® course covers the overall risk management process. The focus of this course is on the data centre infrastructure, the physical data centre facility and equipment. The participant will learn how to identify and quantify risk in their organisation, creating the ability to reduce the risk to a level acceptable for the organisation, allowing them to make sound investment decisions based on facts rather than emotions. CDRP® is a must for every organisation that wants to manage their risk without over spending.



**Duration :** 2 days  
**Prerequisite :** None

Data centre migration is an exceptionally high-risk undertaking. Most data centre professionals have never done this before. CDMS® covers all aspects of a data centre migration. It provides a step-by-step methodology which will enable them to reduce the risks involved in such a complex undertaking. It will also provide participants with valuable and practical hints and tips used by seasoned data centre professionals who have done multiple complex migrations.

## Standards / Compliance Specialisation



**Duration :** 3 days  
**Prerequisite :** DCFC®/CDCP®

Understanding the intent of the ANSI/TIA-942 Standard is of fundamental importance, not only for the successful implementation of the data centre, but also for its sustainable operations. In the CTDC® course, the participant will learn how to design an ANSI/TIA-942 compliant data centre. It provides a clear understanding of the requirements of ANSI/TIA-942 and possible implementation variations. This course is well suited for all types of data centres, be it enterprise data centres or multi-tenant, third party data centres such as co-location, managed services and cloud service providers.

**Next Level :** CTIA®



**Duration :** 2 days  
**Prerequisite :** CTDC®

CTIA® is the second course in the Standards/Compliance specialisation. The CTIA® course builds further on the technical understanding of the ANSI/TIA-942 Standard acquired in the CTDC® course. It enables participants to develop skills and knowledge to conduct an internal audit program by applying widely recognised audit principles, procedures and techniques which are aligned with the ISO-19011 auditing guideline.

**Next Level :** CTEA®



**Duration :** To be determined  
**Prerequisite :** CTIA®

The CTEA® course is designed to provide the knowledge and skills to become an external auditor who is able to independently conduct ANSI/TIA-942 conformity audits. The course contains lectures and a variety of business cases exposing and testing the aspiring auditor for his/her auditing capabilities. External auditors could have a major impact on determining the conformity or nonconformity of a data centre to the requirements of the ANSI/TIA-942. As such, the examination is one of the toughest exams in the data centre industry.



# EPI Training Solutions

We created our training services with one key objective - **to help our customers reach their full potential in the data centre and IT management areas through timely and effective training.** Our training solutions have evolved over the years keeping up with technology, but always with the same objective. We have designed a complete training solution with the full flexibility to address all the various needs of our customers from all over the world.



## Learning Methods

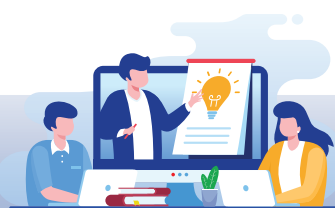
We deliver our training through 3 key delivery methods – ILT (Instructor Led Training), VILT (Virtual Instructor Led Training) and TOD (Training On Demand).



### ILT

#### Instructor-Led Training

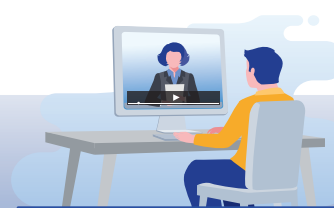
Classroom in person, face-to-face training in a physical location.



### VILT

#### Virtual Instructor-Led Training

Live class delivered over the internet using the latest online classroom technology for optimum learning.



### TOD

#### Training On Demand

Studio recorded video courses available on-demand, 24x7, via the EPI online learning portal - [www.epi-academy.com](http://www.epi-academy.com)

With these three learning methods, we can address the different learning preferences. For those who prefer interaction with peers, they can choose between an ILT or VILT. For individuals who prefer to learn at their own pace, anytime, anywhere via any device, we have the TOD option.



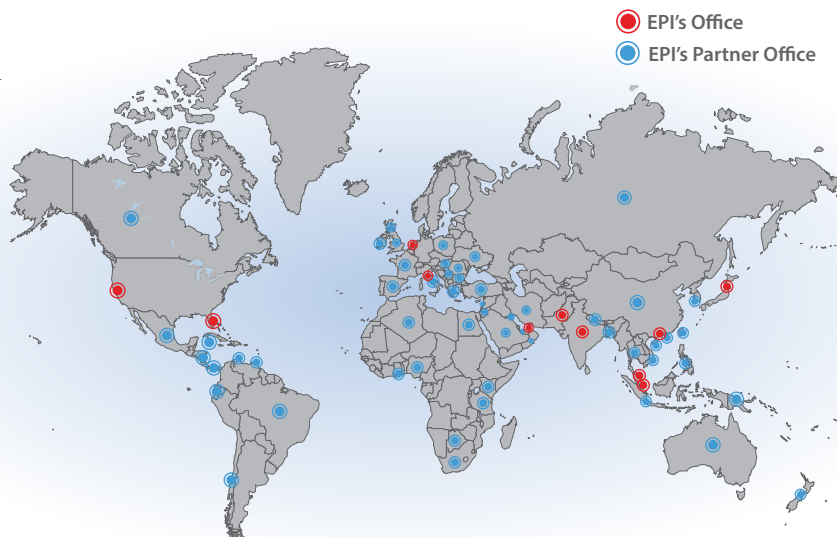
**EPI-Academy** is the EPI Training-On-Demand (TOD) platform with online video courses which are available anytime, anywhere and on any device.

Customers taking the TOD courses will have the flexibility and control to take the video study modules whenever it suits their work schedule. They have the ability to pause, rewind, and replay the modules which allows them to better digest the information and increase retention.

## Global Delivery Capability

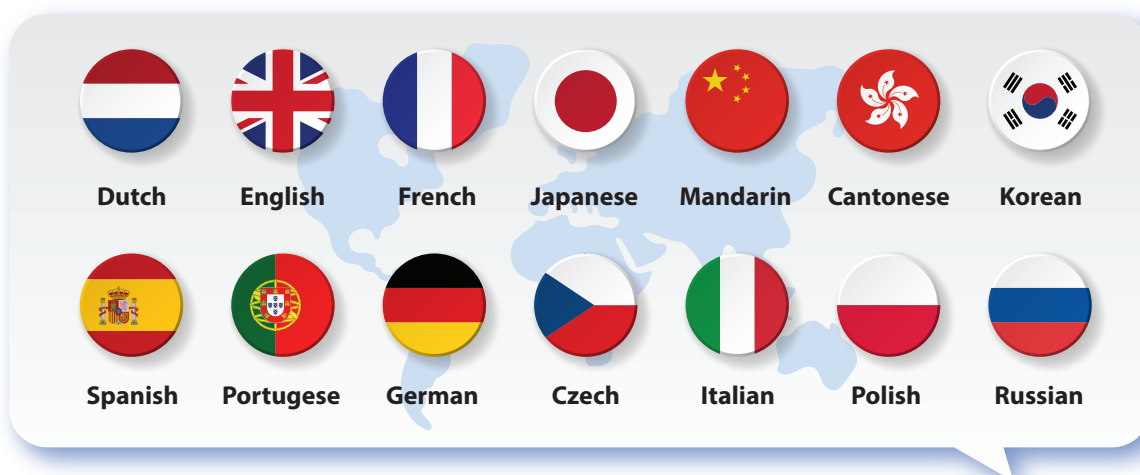
EPI's ILT courses are available in 130+ locations worldwide, through our direct operations and extensive partner network. We have partnered with established local training providers in 60+ countries in the major cities to provide customers with access to ILT training in a location closer to them.

Additionally, the VILT and TOD options are available for customers from anywhere in the world with an internet connection.



## Multilingual Delivery

We are currently the only training provider in our areas of specialisation with the capability to deliver in 14 languages, with more being added.



## Public and Private Classes

EPI delivers both public and private/in-house classes. If your organisation prefers a private/in-house class then EPI can deliver this in any location of your choice or via an exclusive VILT session.

## Exams

EPI exams are available at all our training partners' locations around the world, as well as online from the comfort of your own home or office. The online exam (EXIN Anywhere exam) uses state-of-the-art online proctoring technology. All you need is an internet connection and a laptop.



## Training Subscription & Global Contract

More and more large multinational companies are facing an increasing workload managing the complexity of training staff scattered across different locations/timezones. This is compounded by staff on various ranks/levels and on different career paths.

We have the training subscription and global contract solution to help customers ease their staff training workload. We enable organisations to provide consistent high-quality training to their personnel in all corners of the world which saves time, effort and with a predictable yearly investment.

The EPI training subscription allows companies to give their staff access to our extensive library of TOD courses on EPI Academy. It is both a learning portal and a repository of invaluable knowledge which is updated with the latest changes in the industry and verified by an independent accreditation body. This means the company personnel will always have access to the most relevant information that will allow the company to keep ahead of the competitions. The TOD courses also prepare the personnel for EPI's globally recognised certifications, adding credibility and great value to the organisation. It is fully compliant with major LMS and therefore can be integrated into an existing LMS which the organisation might already have deployed.

Some organisations may prefer to have, or include, the ILT/VILT learning modalities. With our global contract, companies with annual training plans would be able to enjoy significant savings.





## Global Accreditations & Recognitions for Data Centre Professionals

All of EPI's courses are globally endorsed and accredited by EXIN. Every course requires a certification exam. Passing the certification exam demonstrates knowledge of the subject and participant will be awarded with an internationally recognised certification. These certifications are accredited and awarded by EXIN, a global independent accreditation and examination institute which has certified over 2 million students worldwide. Accreditation by EXIN ensures quality and impartiality of the EPI certifications awarded to IT and data centre professionals who passed our certification exams.

EPI's courses are also registered with BISCI and recognised for BISCI Continuing Education Credits (CECs).



## The Company

EPI is a company of European origin operating world-wide in over 60 countries through direct operations and a large partner network. EPI offers an extensive range of data centre services on consultancy, auditing, certification and training. EPI's focus is on mission-critical, high-availability environments. Established in 1987, EPI has developed an international reputation for delivering high quality technical expertise, with flexible and innovative solutions, techniques and methodologies.

All our services are aimed at helping our customers to:

- Increase **Availability** of their mission-critical infrastructure
- Improve **Efficiency, Effectiveness** and **Manageability**
- **Minimise risk** of business interruption

Our clients share a common need to protect their valuable data, run their mission-critical infrastructure efficiently and to be protected on a 24 x 7 basis. By protecting the interests of our customers, EPI is committed to an intensive program of comprehensive services development backed by engineering and support excellence.

Quality systems and procedures have always been at the heart of every stage of our service delivery to ensure consistent and high quality services. We are known for our thoroughness, flexibility and responsiveness in our project management. We focus on providing solutions that fit each organisation and each project with a drive to deliver quality on time, every time.

*Let us put our expertise to work for you!*



Global Headquarters:

**Enterprise Products Integration Pte Ltd**

37th Floor, Singapore Land Tower, 50 Raffles Place, Singapore 048623.

Tel: + (65) 6733-5900 E-mail: [sales@epi-ap.com](mailto:sales@epi-ap.com) Website: [www.epi-ap.com](http://www.epi-ap.com)

Local offices in : China, India, Italy, Japan, LATAM, Malaysia, Middle East, Pakistan, Singapore, The Netherlands, USA

**R20-01**

Authorised Reseller/Partner:



**Iverson Associates Sdn Bhd (303330-M)**

Tel: + 603 772 62678 / + 6012 602 6277

E-mail: [sales@iverson.com.my](mailto:sales@iverson.com.my)

Website: [www.iverson.com.my](http://www.iverson.com.my)